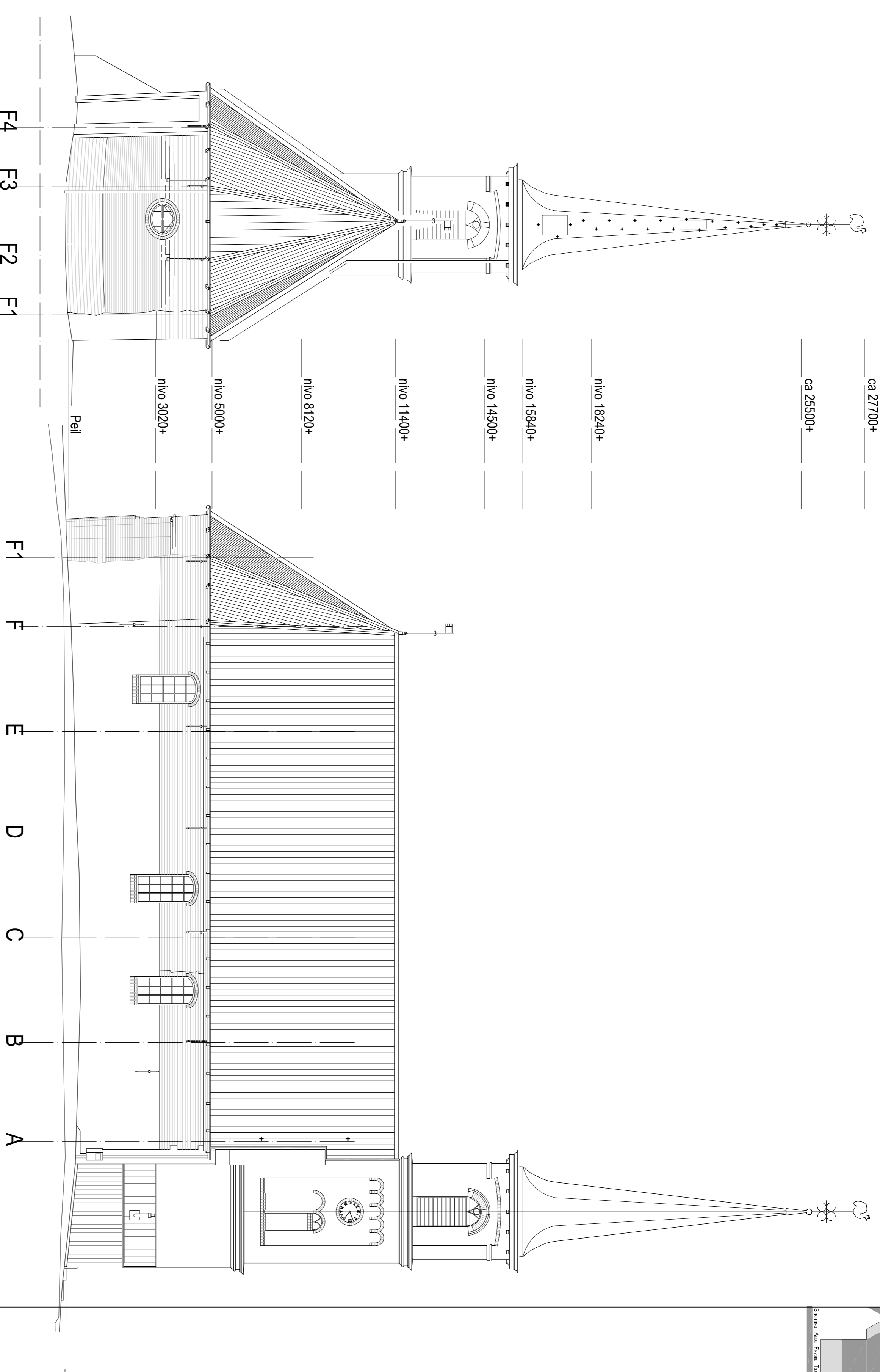
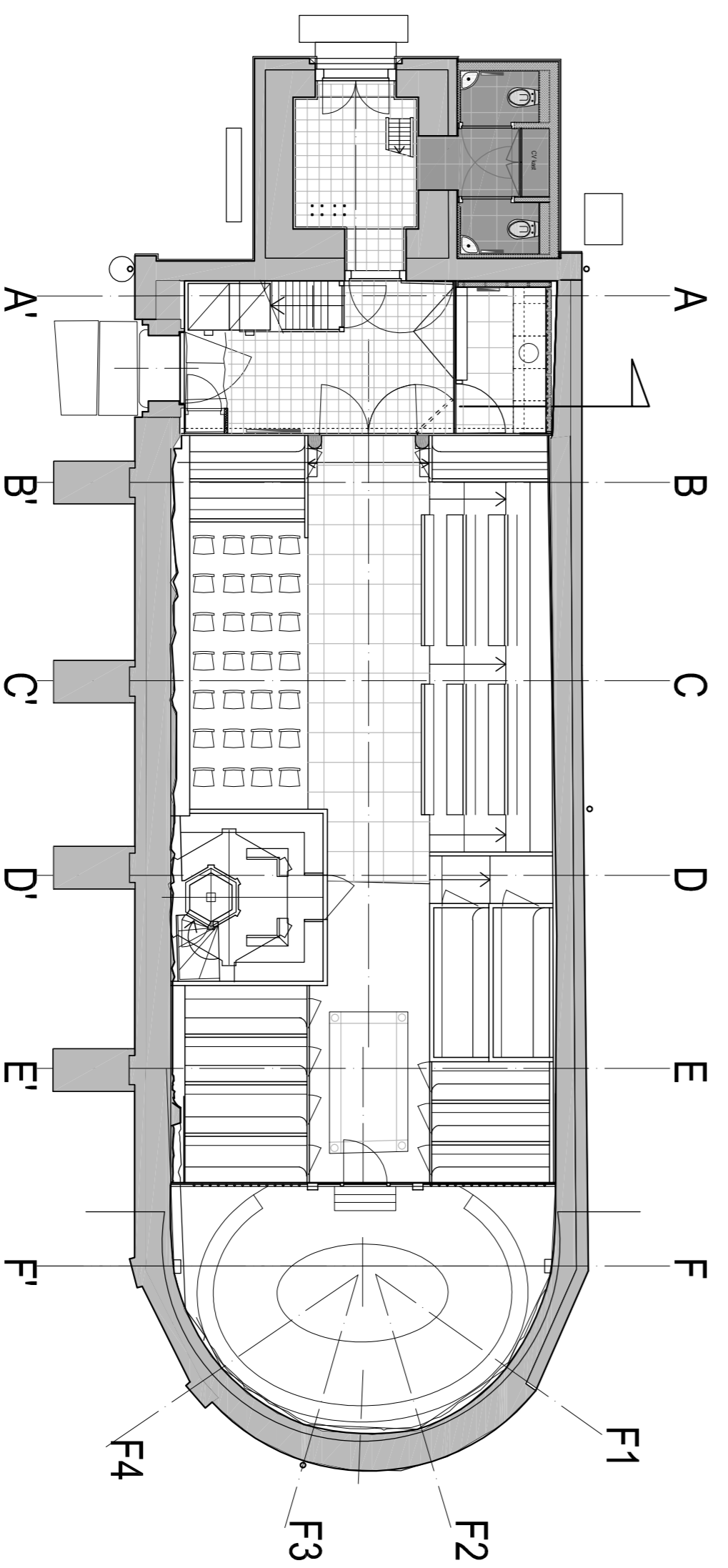


Zuid gevel

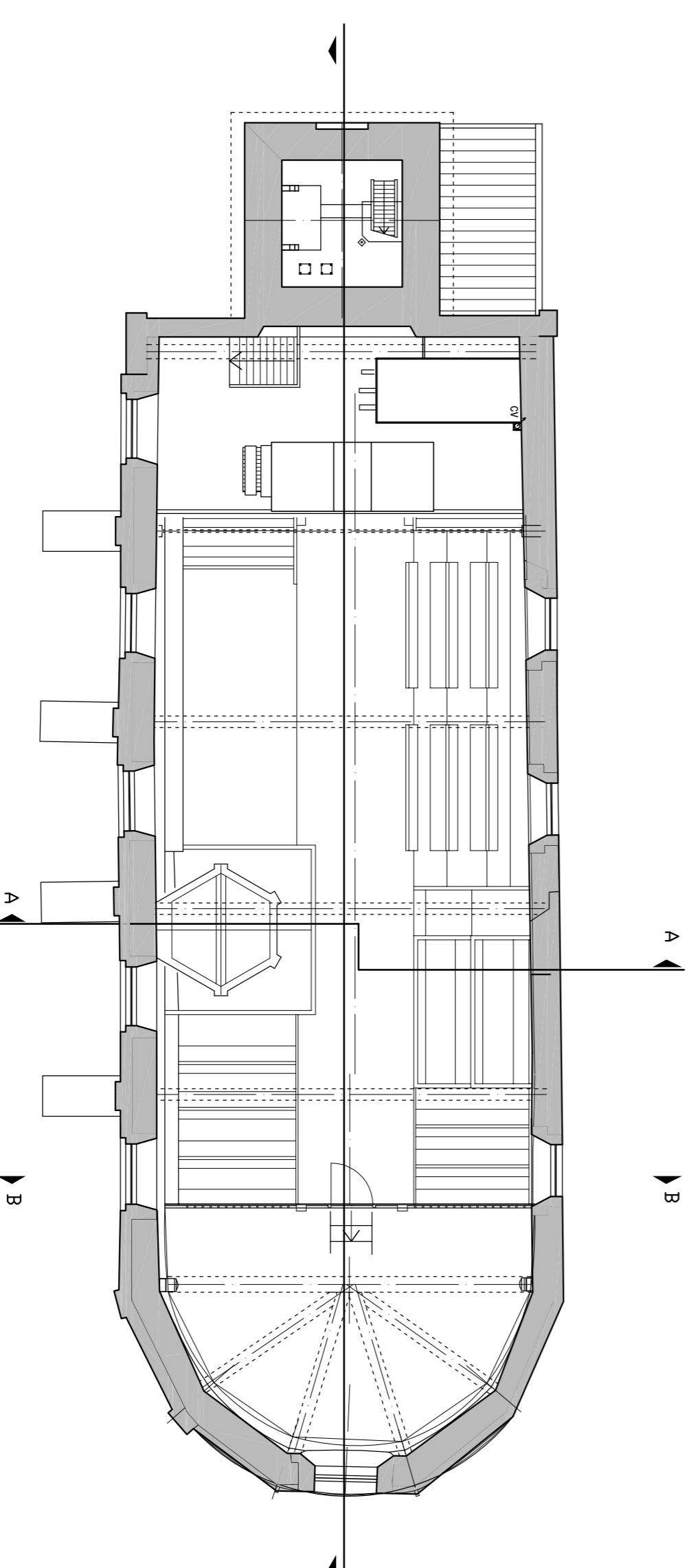


Oost gevel

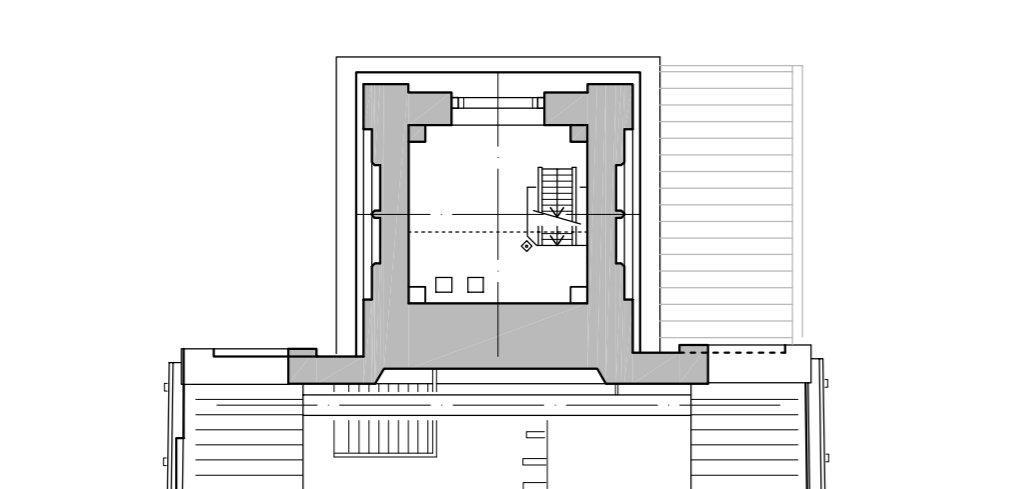
Noord gevel



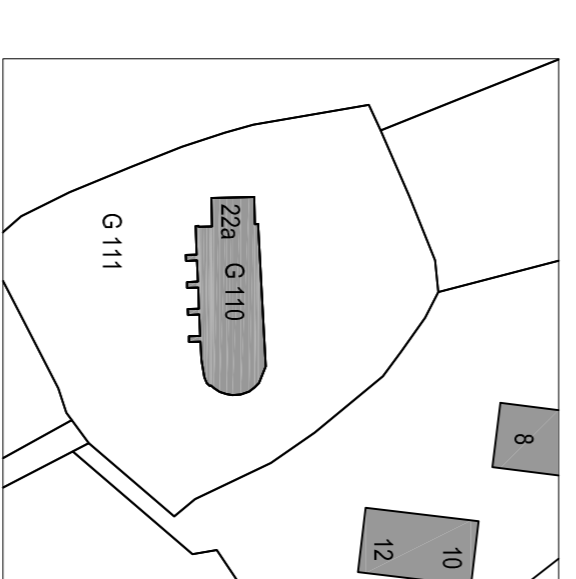
begane grond



nivo 3020+



nivo 5000+



Situatie

keizergraven, Berlikum
kadaster, G 110
monnik, 268256
adres:
Tsjerkwei 22a
9043 VN Wier

Restauratie Kerk te Wier
Stichting Aïde Fryske Tsjerken

Plattegronden en gevels
Revisietoelating

R1-01
1:100
30-08-2012

Bld / formaat A1
Schied
Datum

Gemiddeld
Genoeg

as/svs
Geeleerd / Oeden

VERSKAFT 7
9101 MH DONKLUK
TELEFON 0519-295865
FAX 0519-292870
INFO@ADEMA-ARCHITECTEN.NL

ADEMA ARCHITECTEN

